



BLUE
SAVANNAH

Sky



discover • explore • experience

Limpopo





Limpopo is a South African province bordering Botswana, Zimbabwe and Mozambique.

It's known for bushveld and wildlife reserves, including part of Kruger National Park.

West of the Kruger are the craggy Blouberg mountains and Makgabeng Plateau with ancient rock art.

Near the provincial capital Polokwane, the Arend Dieperink Museum and fossil-rich caves of Makapansgat explore history dating back to early hominids.

Limpopo is home to the Mapungubwe Cultural Landscape, one of the country's seven World Heritage sites.

- **Capital City:** Polokwane (before 2002, its name was Pietersburg)
- **Airport:** Polokwane International Airport - PTG
- **Best time to visit:** The weather is often at its best in March and April, when there is little wind or rain and temperatures are not too stifling. By contrast, the spring months of September or October are the best time for game viewing in Kruger and other reserves.
- **Food specialities:** Mopani worms, Roasted termites, Umqombothi (traditional home-brewed beer), Chicken feet, Cow heels, Giblets and Tripe, Sides of Samp, Pap, Peanuts and Beans, Ceasers Roadside Chicken.
- **Language:** English is regarded as a business language but other native languages of the province include Tshivenda, Sepedi, Xitsonga, Setswana, Isindebele and Afrikaans.

Natural Attractions in Limpopo



1. Baobab trees

Africa's giant upside down tree, north of the Soutpansberg mountains.

Their flowers bloom at night, and are pollinated by bats.

They function as water storage containers, their large trunks providing elephant, eland and other animals who chew their bark, water during the dry season.

The largest ever recorded baobab is thought to be the Sunland Baobab, in Modjadjiskloof - 22 m high and 47 m in diameter.



2. Kruger national park

The country's largest game reserve with a huge network of roads. Tourists from around the world come in search of elephant, buffalo, rhino, cheetah, lion, giraffe, hippo, zebra, well over 500 species of bird, and thousands of other animals besides.

Vast African plains interspersed with granite kopjes, rivers, the Lebombo Mountains in the east, and a series of forests in the far north, dawn game drives, thatched roof accommodation and the eerie night chatter of hyenas or wild dogs on the prowl.



Natural Attractions in Limpopo

3. Magoebaskloof



Known as the Land of the Silver Mist, Magoebaskloof is a dense forested area in the mistbelt of the northern Drakensberg. Regarded as a birding and hiking paradise it is a series of pine and eucalyptus plantations, green valleys and some of the most extensive Afromontane forests in the country. The Magoebaskloof Pass connects Tzaneen and Haenertsburg, rising quickly to 558 metres, its famous S-bends and hairpin corners famous for mist and fog as it ascends the Magoesbaskloof.

Visit Woodbush Forest, the largest remaining tract of indigenous montane forest in the country, and Debengeni Falls.



4. Mapungubwe

South Africa's most significant Iron Age site lies where the Limpopo and Shashe Rivers meet, close to Zimbabwe and Botswana. Once the largest kingdom on the sub-continent (between 900 and 1300 AD, at the same time as Europe's Dark Ages), it was abandoned in the 14th century. Today the untouched remains are preserved as a Cultural Landscape by UNESCO.

The most intact artifact, now kept safe by the University of Pretoria, is a little gold rhino figurine. Visit Mapungubwe National Park.



Natural Attractions in Limpopo



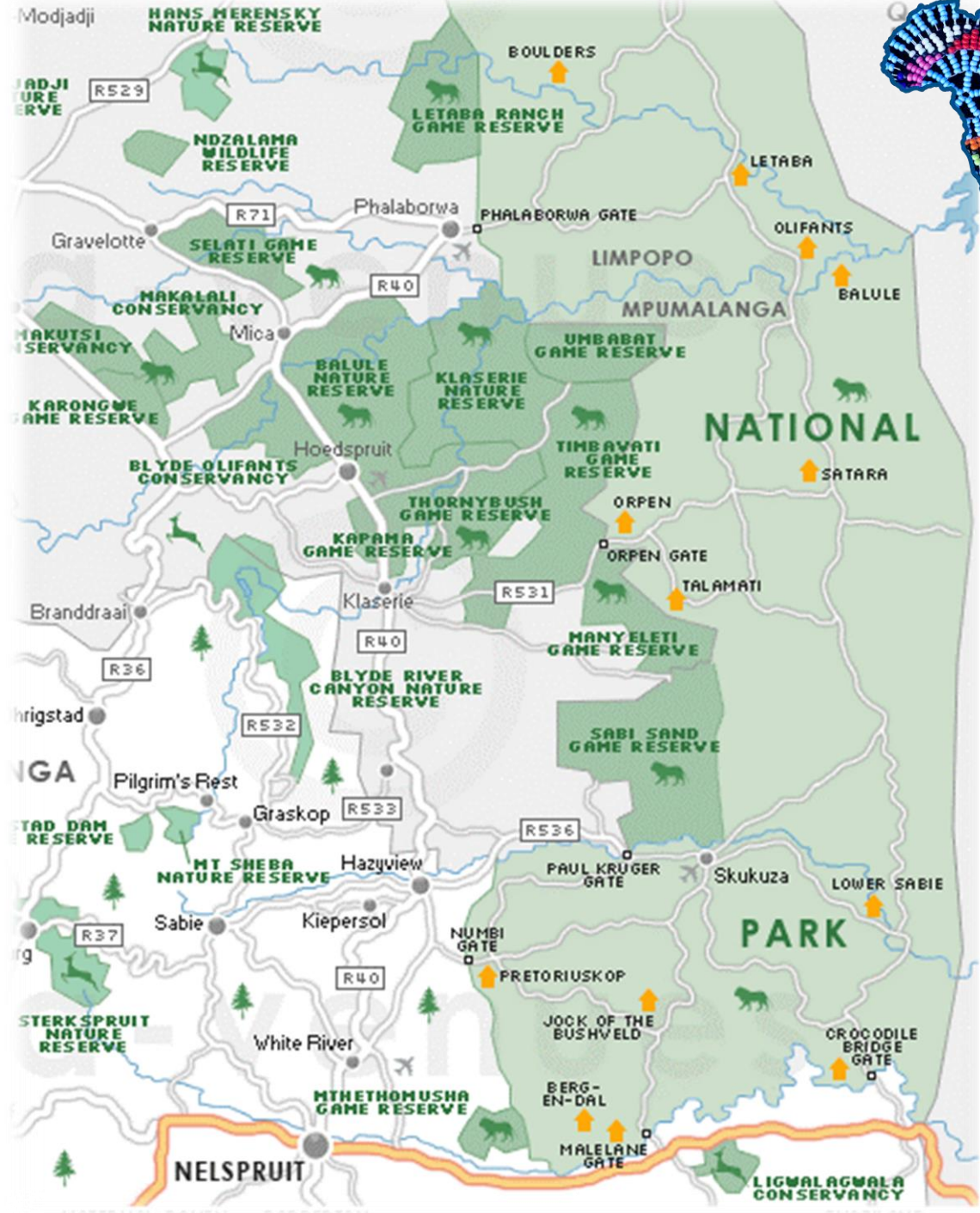
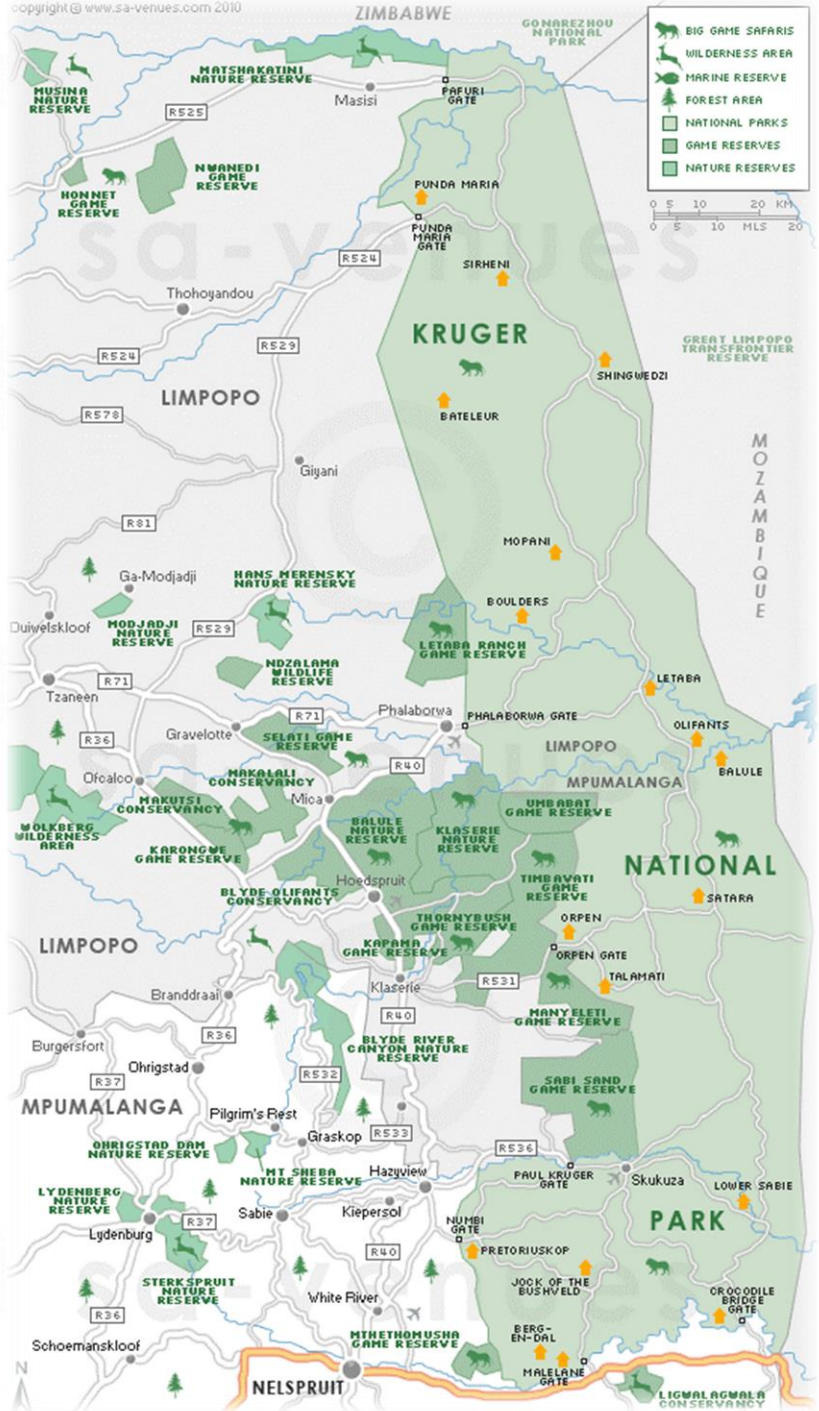
5. Marakele national park

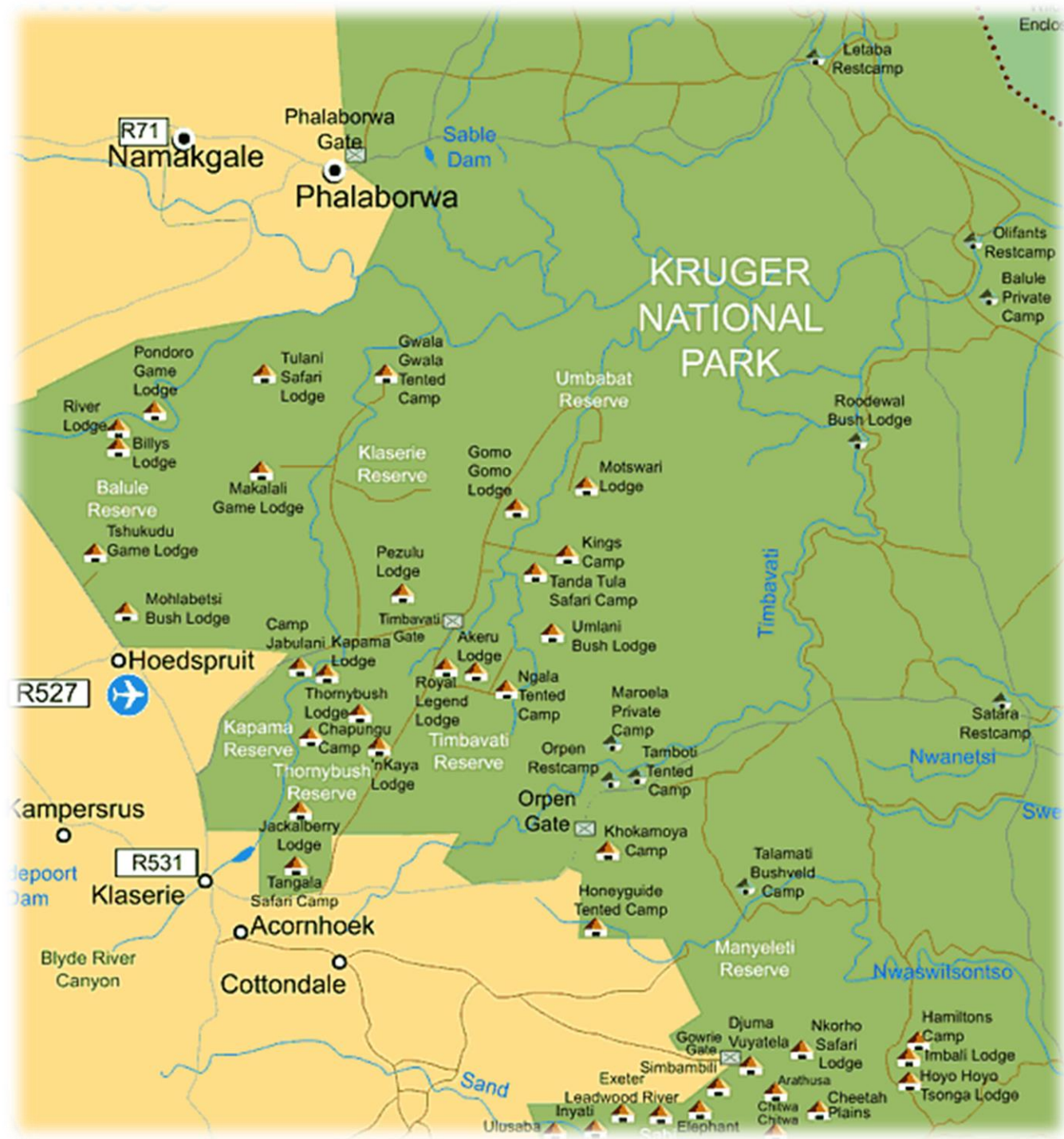
Lying in the midst of the Waterberg Mountains, Marakele gets a raw deal because of the looming presence of the Kruger. The park, however, is not your average 'bushveld' experience. Not only is the huge Kransberg Mountain home to the world's largest colony of Cape vultures, but the constant presence of the mountains functions as refreshing landscape. Bushveld birdlife here is incredible, and includes the Verreaux and Wahlberg eagle.



6. Waterberg biosphere reserve

The first savanna biosphere reserve in southern Africa, the Waterberg Biosphere Reserve covers some 15 000 square kilometres, one of the country's champion conservation projects and an incredible, malaria-free space in which to view wildlife. Within the reserve are two major game reserves - Marakele and Welgevonden, and the Lapalala Wilderness Area.







KRUGERPARK.COM
0861 KRUGER

- Legend**
- H4 Highway
 - H3 Tar Road
 - S60 Dirt Road
 - Restcamp
 - Caravan/Camping
 - Petrol Station
 - Private Lodge
 - Wilderness Camp
 - Entrance Gate
 - Picnic Spots
 - Lookout Point
 - Airport
 - Railway
 - Waterholes/pans
 - Point of Interest
 - River
 - No Entry

SOUTH AFRICA
(Mpumalanga Province)